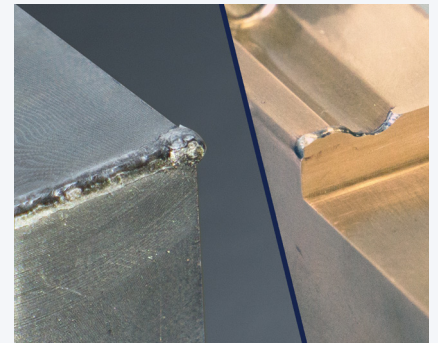


Sanwa Micro TIG & Resistance Welder

High-Power with Precise Results



Sanwa Micro TIG and Resistance Welder

8300500

Weld Pro SW-V02

The Sanwa TIG Welder (Model SW-V02) delivers precision and power for mold repair, fine sheet metal work, and component welding.

With the ability to weld up to 2.0mm, with minimal distortion and user-friendly navigation, it is a versatile solution for high-precision applications. Ideal for mold and die repair and shim adjustments, enabling quick and easy operation. Advanced inverter control generates a slight after-arc (residual heat) after fusion, ensuring reliable and consistent weld penetration. Featuring advanced inverter control, integrated TIG and resistance welding, and specialized modes for aluminum, it supports both beginner and expert welders.

Key Features:

- **High Power Capacity:** Weld from 0.1mm (0.005") to 2.0mm (0.075") diameter wire.
- **Precision Inverter Control:** Maintains after-arc heat for improved weld penetration, especially on heat-diffusive metals like aluminum.
- **Distortion-Free Welding:** Zero base current between peaks minimizes deformation for cleaner, more even weld beads.
- **Dual Welding Modes:** Choose between SINGLE and DOUBLE wire settings to match skill level and application complexity.
- **All-in-One Integration:** Combines TIG and resistance welding in one unit.

Set Includes:

- Gas hose
- Tungsten electrodes
- Foot switch
- Resistance welding handpiece
- Torch for TIG welding
- Ground cord

Specifications:

- Input Voltage: 230V, 50/60Hz, 1 Ph
- Rated Output Current: 10.4 kVA (Peak value) and 2.8 kVA (Average value)
- Maximum Voltage of No-Load: approx.76V (TIG welding)
- Output Current when Resistance welding: 30~750 A
- Output Current when TIG welding: 2~250 A
- Welding Time when Resistance welding: 1~30ms
- Welding Time when TIG welding: 1-600ms
- Repetition Period when Resistance welding: 400ms
- Repetition Period when TIG welding: 0.1~2.0s
- Control Method: Inverter Method
- Cooling Method: Force air cooling
- Dimensions: 284Wx425Dx390H (mm) or approx. 11.2x16.73x15.35"
- Weight: 23.8 kg or approx. 52 lbs.



Sanwa Scopes

8300540

Scope One Lock Arm Set

This 10x stereo microscope is securely held at the angle you select. Joints can be locked with one dial. The microscope can slide vertically while maintaining the horizontal position. Mounted on a strong magnet; operated by a switch. Weighs approximately 5.5 kilograms (approx. 12 lbs.).



8300535

Scope Standard Arm Stand Set

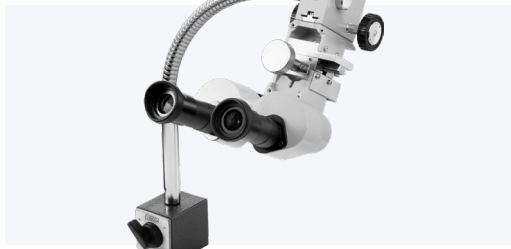
This 10x stereo microscope is securely held at the angle you select. Multiple joints allow you to locate the microscope at the position best suited for your work. Securely clamps to your worksurface. Weighs approximately 4.2 kilograms (approx. 9-1/4 lbs.).



8300530

Scope Standard Bendable Shaft Set

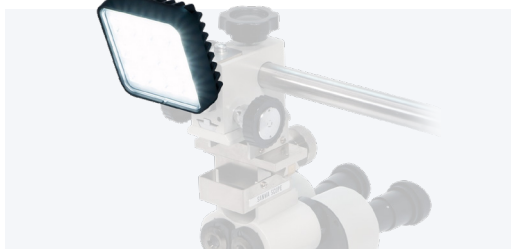
This 10x stereo microscope is on a 180 degree bendable 400mm (15.75") long neck making it easy to position for the best viewing. Mounted on a strong magnet; operated by a switch. Weighs approximately 3 kilograms (6-1/2 lbs.).



8300560

Scope Light LM1000

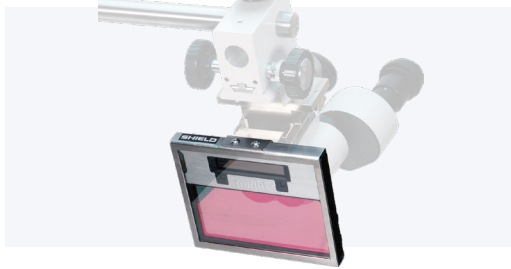
Ensure a brighter and sharply defined working space by pairing the LM1000 light with your Sanwa Scope. Easily mount this 1000 lumen, 12-piece LED light onto your Sanwa scope and you'll have the optimal lighting for your micro-welding. Consider adding a light blocking shield, sold separately.



8300562

Scope Light-blocking Shield S20

This light shield mounts on the Sanwa microscope via a magnet. This shield protects the eyes from the bright arc flash when looking through the microscope during the welding operation.



Sanwa Accessories and Replacements

Sanwa SR-9 Torch Set with Cord

8300514



3mm Resistance Welding Handpiece

8300523



(electric rod sold separately)

2mm Resistance Welding Handpiece

8300522



(electric rod sold separately)

Replacement Tungsten Electrodes



3.0mm - 8300503



2.0mm - 8300502



1.0mm - 8300516

Sanwa Welding Helmet 1600

8300508



The Sanwa Welding Helmet 1600 protects from ultraviolet rays generated during TIG welding. Offers Shade #2 rating in the main viewing area.

Argon Flow Regulator

8331791



P2 outlet pressure 3.5 bar.
Q1 standard delivery flow >2 m3/h.



Learn More
About the Sanwa
TIG Welder