

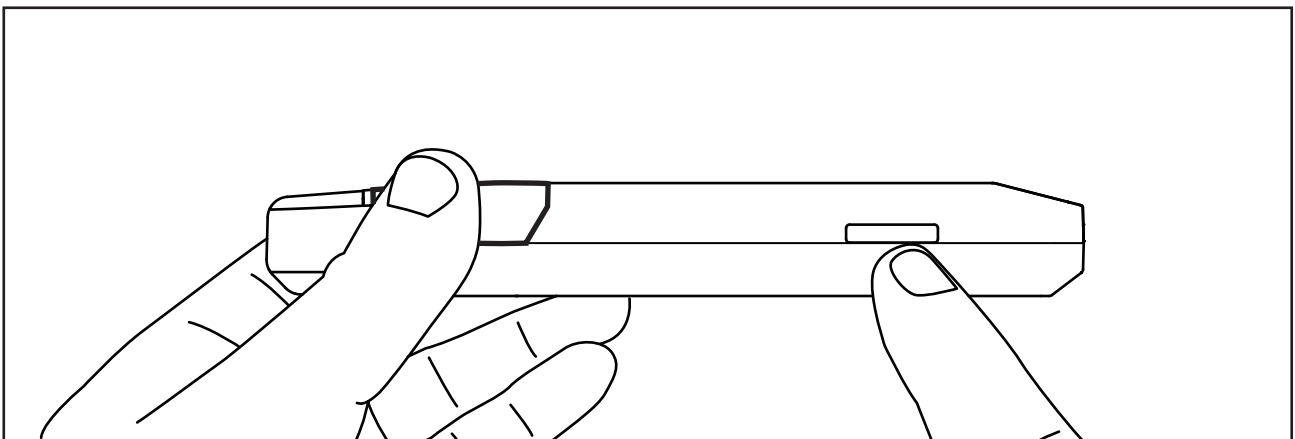


APEX

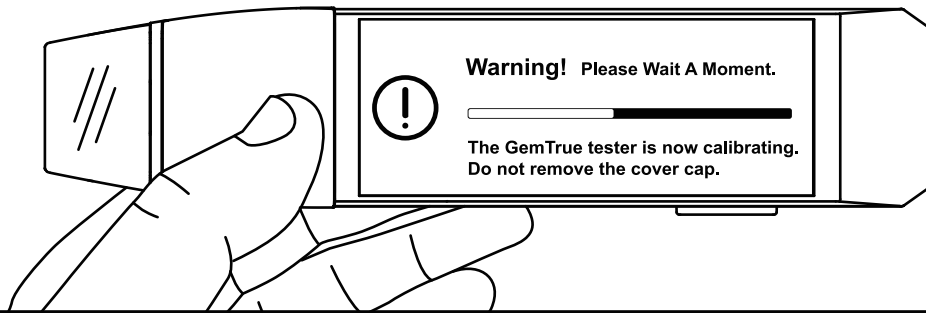


**Thank you for your purchase of the
GemTrue® APEX DK10300
Developed for excellence in synthetic
diamond testing.**

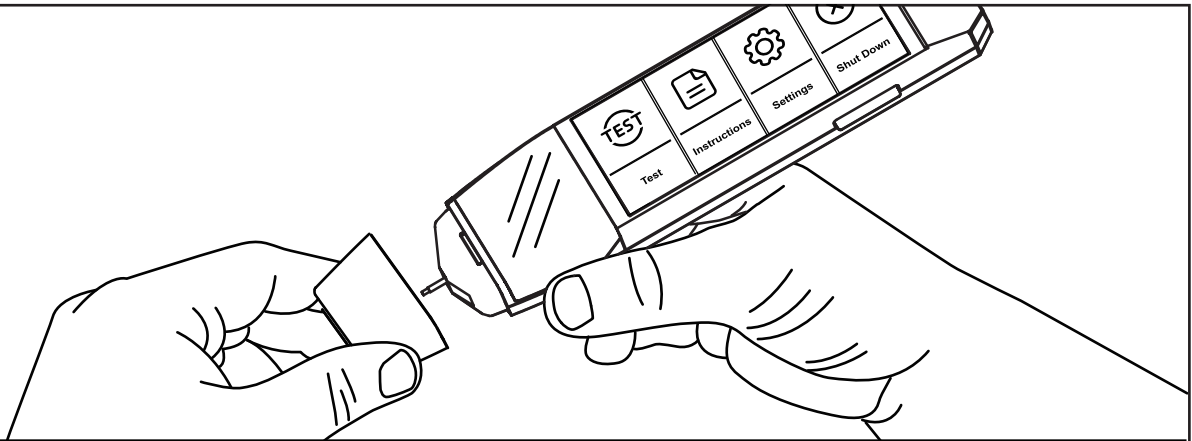
It is important that you read this user guide to gain a good understanding of this device and how it should be used to obtain accurate test results.



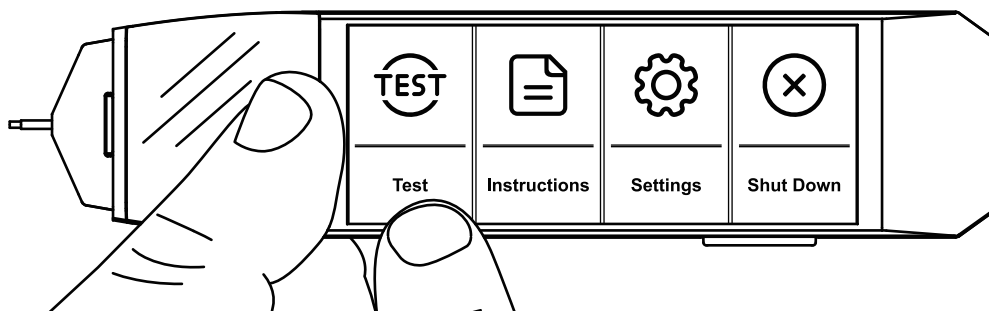
**1. Press and hold the power button
until it beeps, then release.**



2. Wait for calibration to complete.

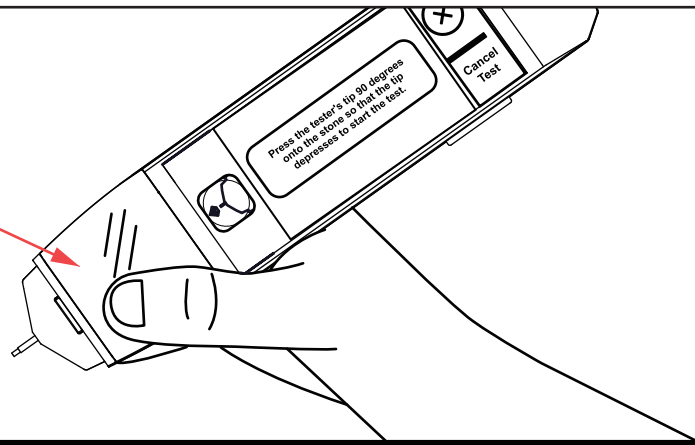


3. Please remove the cap and wait.

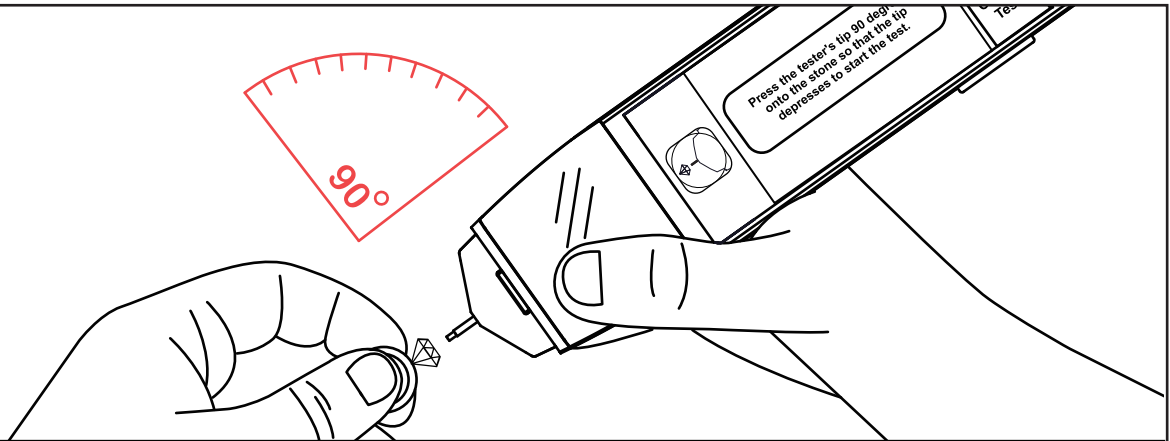


4. Choose the test option.

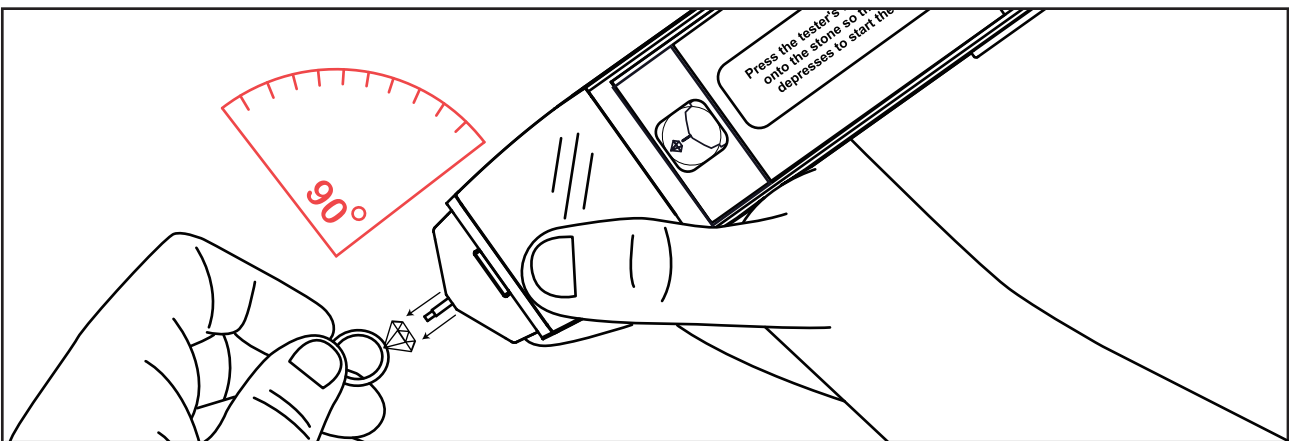
Metal Touch Area



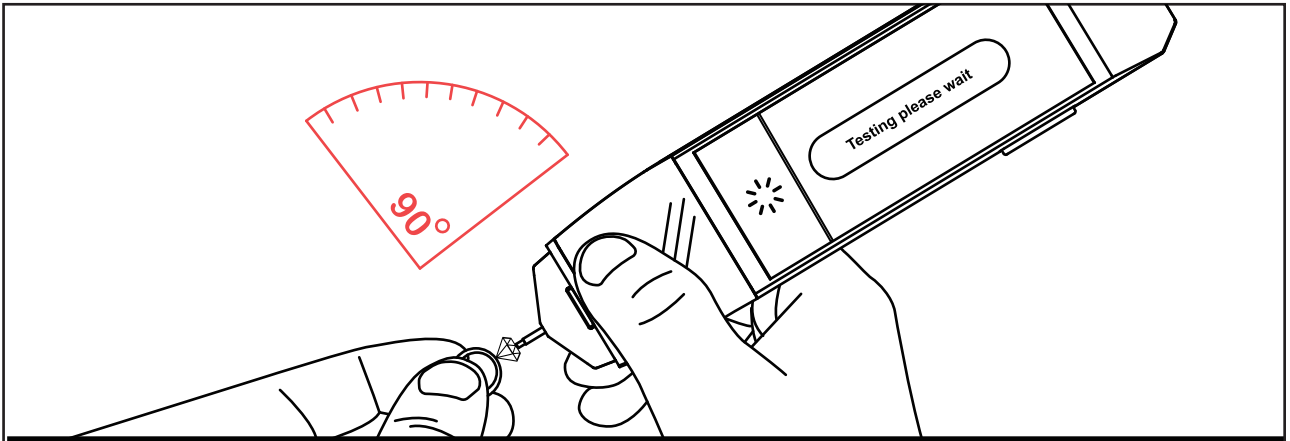
5. Always make sure to hold the metal touch areas during testing for accurate results.



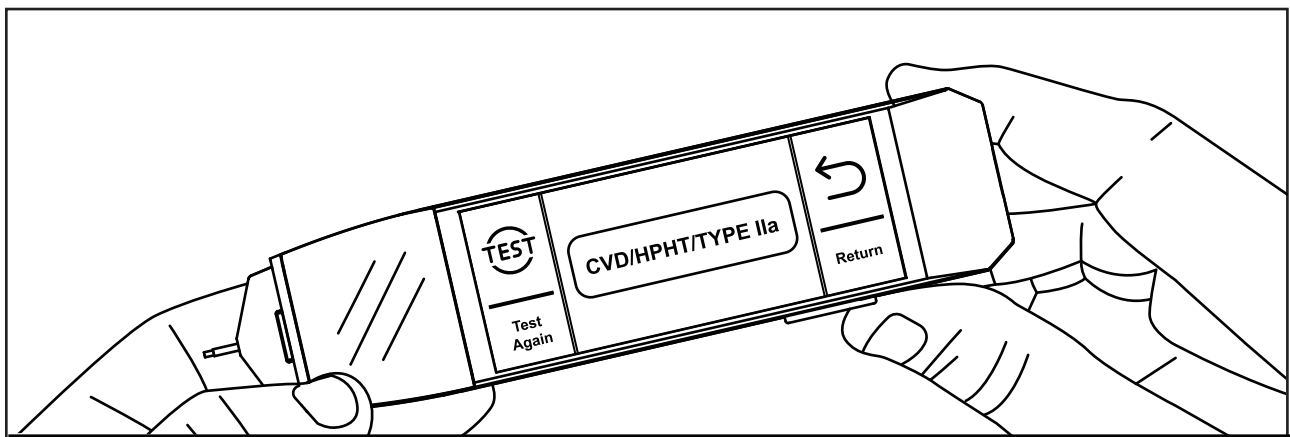
6. Hold tester and Jewellery at 90 degrees to one another.



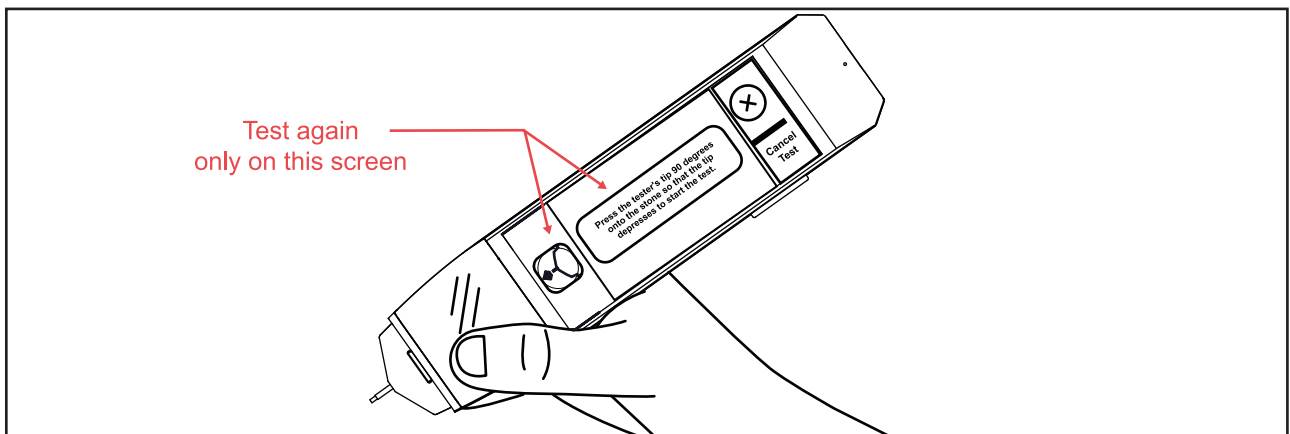
7. Press the probe firmly at 90 degrees onto the stone's table facet to start the test.



8. Do not move or release. Wait for result.



9. Test result will appear on the screen,
Do not touch or retest while results show.



10. Wait for auto-return to this testing screen
before testing again.

GEMTRUE® APEX DK10300

Advanced All-in-One Synthetic Diamond Tester



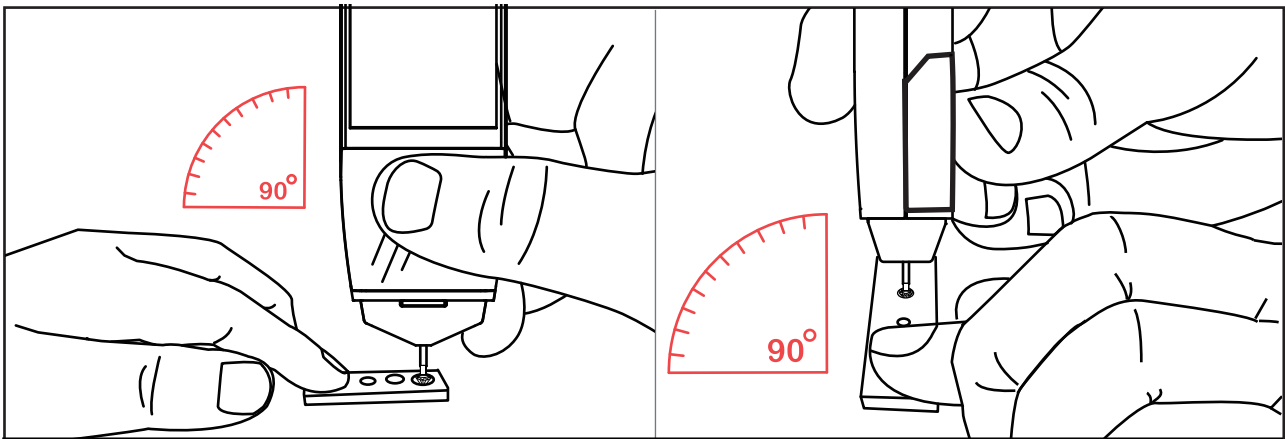
Diamond

CVD/HPHT/TYP E IIa

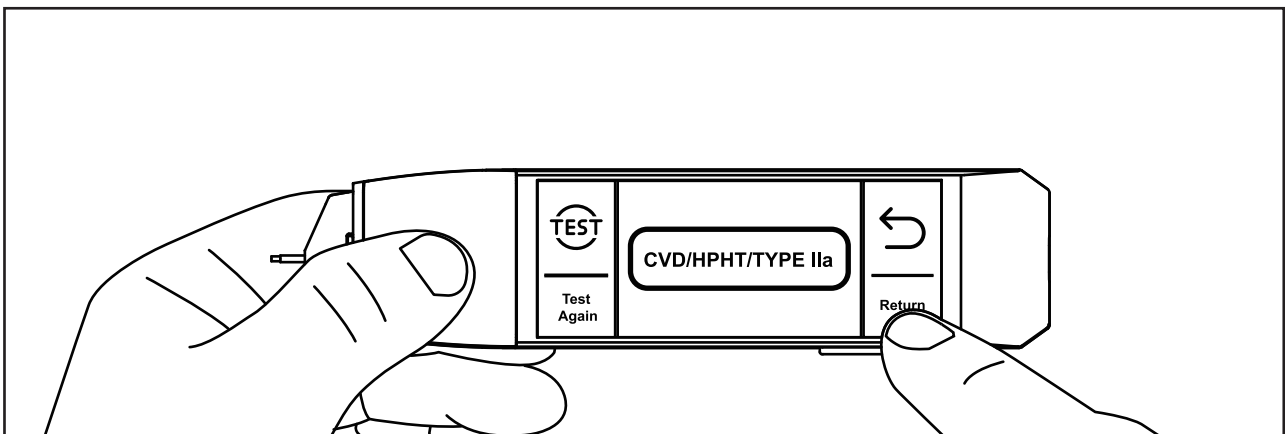
Moissanite

Simulant

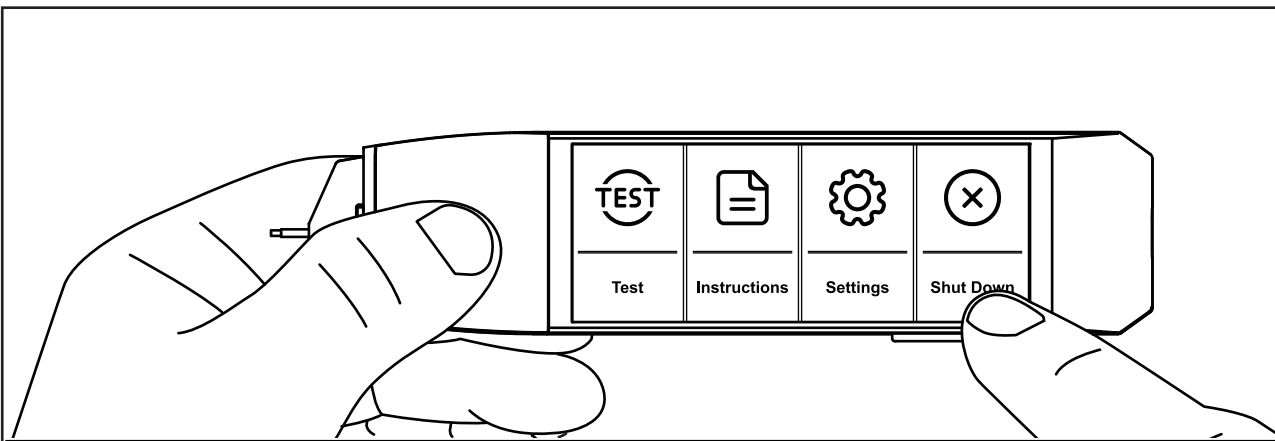
Cubic zirconia



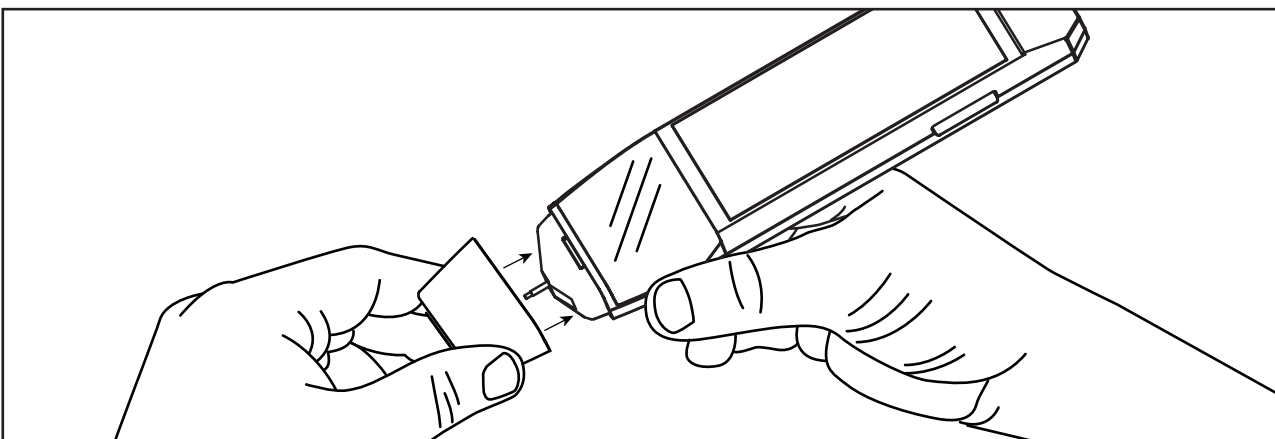
11. Place loose stone on the plate. Press the probe firmly at a 90-degree onto the stone's table facet



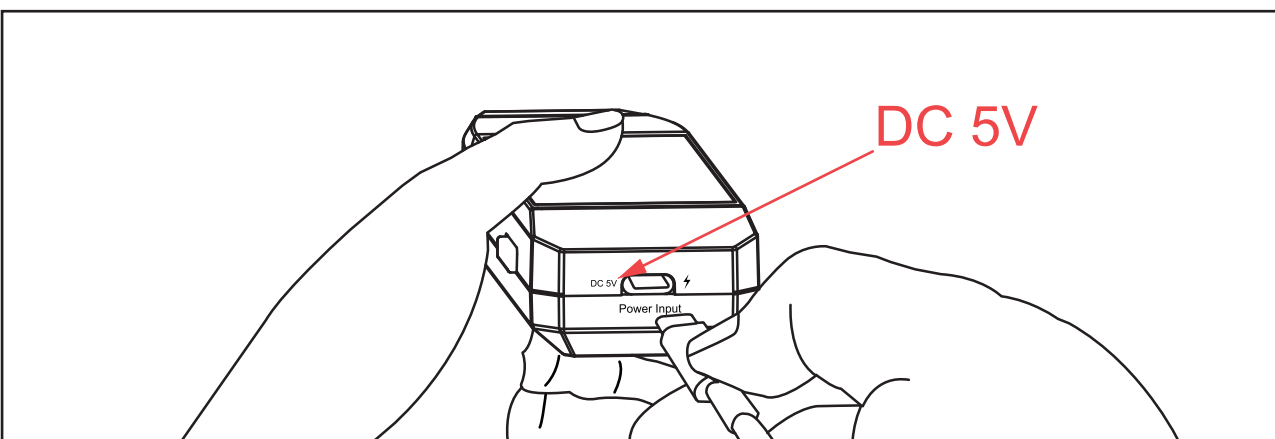
12. Wait for auto-return to test again or select "Return" to the main menu.



13. To turn off the device,
press the shut down option.



14. Always replace the cap when you are
not using the device.



15. Insert the Type-C cable with a 5V / minimum
0.5A charger to recharge the device.



16. When plugged in, the power light is red, it turns green when fully charged.

IMPORTANT NOTES

A. Battery Usage

Charge the tester fully before use. Low battery may affect accuracy. Recharge when the battery icon reaches the last red bar. Avoid using the tester while charging to prevent reducing battery life.

B. Charging

Use the provided USB-C cable for optimal charging.

The front power light turns red when charging and green when fully charged.

Required charger: DC 5V / Minimum 0.5A (does not support PD fast charging).

C. Retesting

Wait for the result to clear before retesting.

Allow stones to cool between tests to prevent heat buildup, which may affect results.

D. Testing Stones

This tester is designed for testing CVD/HPHT/Type IIa, Moissanite, Natural Diamond, Simulant, and Cubic Zirconia (CZ).

E. Stone Colour Range

Optimized for polished stones with D to M color range. Stones outside this range or unpolished stones may yield inaccurate results.

IMPORTANT NOTES

F. Stone Cut and Size

Designed for round brilliant-cut stones.

Minimum testing size: 0.05 ct+.

Fancy-shaped stones may cause inaccurate results.

G. Care Instructions

Clean the tester's tip gently with the included polishing cloth if unused for several days.

Clean stones with a dry tissue before testing to remove dust or oils.

H. Professional Consultation

If the tester provides unexpected results, consult a qualified gemologist or gemological association for further assessment.

This Tester is Fully Patented

US Patents: 12,235,212 / 12,130,238 / 11,243,170 / 11,073,482 / 10,539,010 / 8,947,111 / 10,203,317 / 10,203,288 / 9,453,808

China Patents: 202222990840X / 202210427519.2

Hong Kong: HK40076121 EU: EP3032242B1

SPECIFICATIONS & CONTENTS

Product Specifications

Model: DK10300 APEX

Type: 5-in-1 Advanced Synthetic Diamond Tester

Detects: CZ, Glass, Simulants, Natural Diamond, CVD/HPHT/Type IIa, Moissanite

Use For: Loose & Mounted Stones

Display: High-resolution screen with audio alert

Battery: Built-in 3.7V/2200mAh Li-ion, USB-C charging

Operation Time: ≈2 hrs continuous use; ≈2 hrs charge time

Auto Power Off: After 5 mins inactivity

Size / Weight: 180×40×25mm / Net 0.13kg, Gross 0.9kg

Package: Luxury case + manual + USB cable

Package Contents

- 1 × GemTrue APEX Tester
- 1 × Metal Loose Stone Holder
- 1 × User Manual
- 1 × Cleaning Cloth
- 1 × Protective Cloth Bag
- 1 × Zipper Carrying Case

IMPORTANT SAFETY AND OPERATING GUIDELINES

UV Safety Warning

This device emits UV light briefly during testing. Avoid direct eye exposure to the probe sensor. When used as instructed, the UV light is safe and poses no harm to eyes or skin. Always follow safety guidelines for proper use.

Rechargeable Battery Warning

Charge the device only with the specified charger (DC 5V / Minimum 0.5A). Do not overcharge or leave it plugged in after it is fully charged. Avoid exposing the battery to extreme temperatures or direct sunlight. For safe disposal, follow local recycling guidelines for rechargeable batteries.

Operating Conditions

Operating Temperature: 18°C to 28°C (64°F to 82°F)

Storage Temperature: 20°C to 25°C (68°F to 77°F)

Air Humidity: 15% to 70%

GEMTRUE® WARRANTY TERMS AND CONDITIONS

The GemTrue® APEX comes with a 24-month warranty from the date of purchase, provided the device is used as instructed in this user guide.

The warranty covers only manufacturing defects. Battery warranty is valid for 6 months due to its consumable nature.

Warranty Exclusions:

The warranty is void if the device has been disassembled, tampered with, or subjected to misuse.

Limitation of Liability:

- GemTrue® is not liable for any direct or indirect damages resulting from the use of this tester.
 - The device is sold "as is" with no additional warranties, except as required by applicable law.
- GemTrue® reserves the right to modify these terms at any time.